

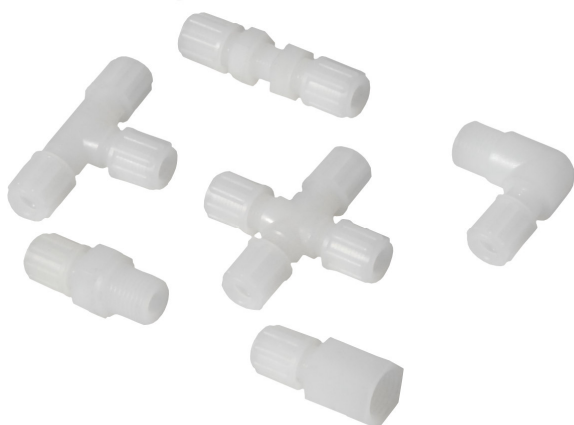
- Sampling Conditioning Systems
- Process Analytics
- System Integration
- Gas Generators
- FTIR-Analysers



conditioning systems

CONDITIONING SYSTEMS

Fittings



FEATURES

- ◆ Gas-tight
- ◆ High chemical resistance
- ◆ Easy assembly
- ◆ Various connection types

GENERAL

The gas-tight JCT fittings are a reliable and approved accessory, which can be used in wide ranges of the analysis technology. They have been designed to securely connect appliances and devices with tubes and pipes. JCT offers a variety of fitting in materials PVDF, PFA and PP in order to assure that the right fitting is available for each application.

TECHNOLOGY

PP and PVDF fittings are using an easy connection principle. The tube is pushed onto an integrated connecting sleeve and secured by the clamping ring

which is compressed by the knurled nut. The cylindrical connecting sleeve assures that the tube is not expanded to more than 6 %. The connection of PFA fittings comprises an integrated connecting sleeve and a sealing ring. A cutting ring compresses the knurled nut and assures a tight and friction-locked connection.

FEATURES

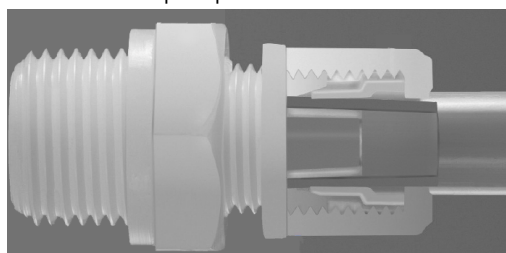
JCT offers a variety of fitting types which are available in different dimensions. Additionally the customer can chose between a G and NPT thread.

Technical Data

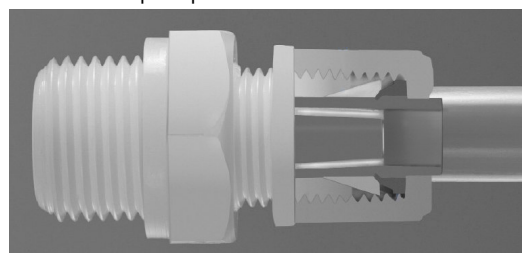
Fitting	PVDF	PFA	PP
Operating temperature	-40 °C up to +140 °C	-200 °C up to +200 °C	+5 °C up to +90 °C
Max. operating pressure at 20 °C	10 bar; max. operating pressure decreases by increase of temperature		
Hose connection	DN4/6, 6/8, 8/10, 10/12 mm ID/OD		
Connection thread	G1/8, 1/4, 3/8, 1/2 pipe thread DIN ISO NPT1/8, 1/4, 3/8, 1/2 US		

Connection principles

Connection principle for connectors made of PVDF & PP



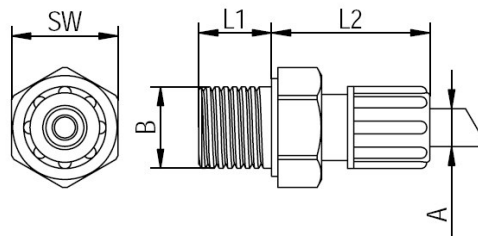
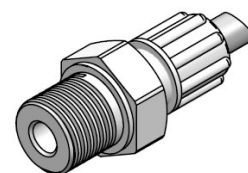
Connection principle for connectors made of PFA



Male Connector with G - Thread

SPECIFICATIONS

Part #	A mm	B Thread	Material	L1 mm	L2 mm	SW mm
80.x0205	DN4/6-	G1/8"-	xx	8	10	14
80.x0210	DN4/6-	G1/4"-	xx	8	15	17
80.x0215	DN4/6-	G3/8"-	xx	12	15	22
80.x0220	DN4/6-	G1/2"-	xx	14	16	27
80.x0225	DN6/8-	G1/8"-	xx	8	10	19
80.x0230	DN6/8-	G1/4"-	xx	12	15	19
80.x0235	DN6/8-	G3/8"-	xx	12	15	22
80.x0240	DN6/8-	G1/2"-	xx	14	16	27
80.x0265	DN10/12-	G1/4"-	xx	12	15	22
80.x0270	DN10/12-	G3/8"-	xx	12	20	27
80.x0275	DN10/12-	G1/2"-	xx	16	20	32



x = Part # depends on material

ORDER INFORMATION - * = available from stock

MADE OF PVDF

Part #	A	Thread	Material
* 80.10205	DN4/6-	G1/8"-	PVDF
* 80.10210	DN4/6-	G1/4"-	PVDF
80.10215	DN4/6-	G3/8"-	PVDF
80.10220	DN4/6-	G1/2"-	PVDF
80.10225	DN6/8-	G1/8"-	PVDF
80.10230	DN6/8-	G1/4"-	PVDF
80.10235	DN6/8-	G3/8"-	PVDF
80.10240	DN6/8-	G1/2"-	PVDF
80.10265	DN10/12-	G1/4"-	PVDF
80.10270	DN10/12-	G3/8"-	PVDF
80.10275	DN10/12-	G1/2"-	PVDF

MADE OF PFA

Part #	A	Thread	Material
* 80.20205	DN4/6-	G1/8"-	PFA
* 80.20210	DN4/6-	G1/4"-	PFA
80.20215	DN4/6-	G3/8"-	PFA
80.20220	DN4/6-	G1/2"-	PFA
80.20225	DN6/8-	G1/8"-	PFA
80.20230	DN6/8-	G1/4"-	PFA
80.20235	DN6/8-	G3/8"-	PFA
80.20240	DN6/8-	G1/2"-	PFA
80.20265	DN10/12-	G1/4"-	PFA
80.20270	DN10/12-	G3/8"-	PFA
80.20275	DN10/12-	G1/2"-	PFA

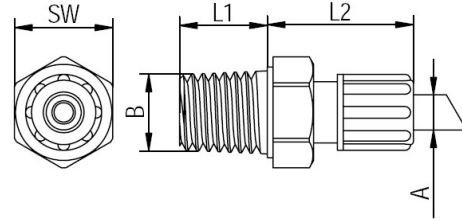
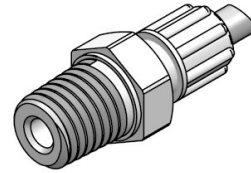
MADE OF PP

Part #	A	Thread	Material
80.30205	DN4/6-	G1/8"-	PP
80.30210	DN4/6-	G1/4"-	PP
80.30215	DN4/6-	G3/8"-	PP
80.30220	DN4/6-	G1/2"-	PP
80.30225	DN6/8-	G1/8"-	PP
80.30230	DN6/8-	G1/4"-	PP
80.30235	DN6/8-	G3/8"-	PP
80.30240	DN6/8-	G1/2"-	PP
80.30265	DN10/12-	G1/4"-	PP
80.30270	DN10/12-	G3/8"-	PP
80.30275	DN10/12-	G1/2"-	PP

Male Connector with NPT - Thread

SPECIFICATIONS

Part #	A mm	B Thread	Material	L1 mm	L2 mm	SW mm
80.x0405	DN4/6-	NPT1/8"-	xx	10	10	12
80.x0410	DN4/6-	NPT1/4"-	xx	15	15	17
80.x0415	DN4/6-	NPT3/8"-	xx	15	15	19
80.x0420	DN4/6-	NPT1/2"-	xx	20	16	24
80.x0425	DN6/8-	NPT1/8"	xx	10	10	17
80.x0430	DN6/8-	NPT1/8"-	xx	15	15	17
80.x0435	DN6/8-	NPT3/8"-	xx	15	15	19
80.x0440	DN6/8-	NPT1/2"-	xx	20	16	24



x = Part # depends on material

ORDER INFORMATION - * = available from stock

MADE OF PVDF

Part #	A	Thread	Material
80.10405	DN4/6-	NPT1/8"-	PVDF
80.10410	DN4/6-	NPT1/4"-	PVDF
80.10415	DN4/6-	NPT3/8"-	PVDF
80.10420	DN4/6-	NPT1/2"-	PVDF
* 80.10425	DN6/8-	NPT1/8"-	PVDF
* 80.10430	DN6/8-	NPT1/4"-	PVDF
80.10435	DN6/8-	NPT3/8"-	PVDF
80.10440	DN6/8-	NPT1/2"-	PVDF

MADE OF PFA

Part #	A	Thread	Material
80.20405	DN4/6-	NPT1/8"-	PFA
80.20410	DN4/6-	NPT1/4"-	PFA
80.20415	DN4/6-	NPT3/8"-	PFA
80.20420	DN4/6-	NPT1/2"-	PFA
80.20425	DN6/8-	NPT1/8"-	PFA
80.20430	DN6/8-	NPT1/4"-	PFA
80.20435	DN6/8-	NPT3/8"-	PFA
80.20440	DN6/8-	NPT1/2"-	PFA

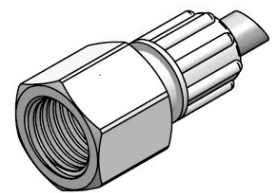
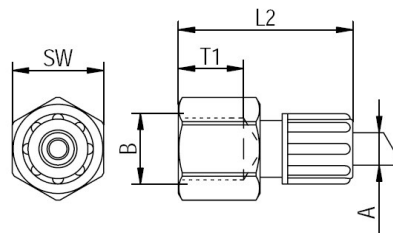
MADE OF PP

Part #	A	Thread	Material
80.30405	DN4/6-	NPT1/8"-	PP
80.30410	DN4/6-	NPT1/4"-	PP
80.30415	DN4/6-	NPT3/8"-	PP
80.30420	DN4/6-	NPT1/2"-	PP
80.30425	DN6/8-	NPT1/8"-	PP
80.30430	DN6/8-	NPT1/4"-	PP
80.30435	DN6/8-	NPT3/8"-	PP
80.30440	DN6/8-	NPT1/2"-	PP

Female Connector with G - Thread

SPECIFICATIONS

Part #	A mm	B Thread	Material	L1 mm	L2 mm	SW mm
80.x0605	DN4/6-	G1/8"-	xx	11	31	14
80.x0610	DN4/6-	G1/4"-	xx	16	36	17
80.x0615	DN4/6-	G3/8"-	xx	17	36	22
80.x0620	DN4/6-	G1/2"-	xx	22	38	27
80.x0625	DN6/8-	G1/8"	xx	11	35	17
80.x0630	DN6/8-	G1/8"-	xx	16	40	17
80.x0635	DN6/8-	G3/8"-	xx	17	40	22
80.x0640	DN6/8-	G1/2"-	xx	22	41	27



x = Part # depends on material

ORDER INFORMATION - * = available from stock

MADE OF PVDF

Part #	A	Thread	Material
* 80.10605	DN4/6-	G1/8"-	PVDF
* 80.10610	DN4/6-	G1/4"-	PVDF
80.10615	DN4/6-	G3/8"-	PVDF
80.10620	DN4/6-	G1/2"-	PVDF
* 80.10625	DN6/8-	G1/8"-	PVDF
* 80.10630	DN6/8-	G1/4"-	PVDF
80.10635	DN6/8-	G3/8"-	PVDF
80.10640	DN6/8-	G1/2"-	PVDF

MADE OF PFA

Part #	A	Thread	Material
* 80.20605	DN4/6-	G1/8"-	PFA
* 80.20610	DN4/6-	G1/4"-	PFA
80.20415	DN4/6-	G3/8"-	PFA
80.20620	DN4/6-	G1/2"-	PFA
* 80.20625	DN6/8-	G1/8"-	PFA
* 80.20630	DN6/8-	G1/4"-	PFA
80.20635	DN6/8-	G3/8"-	PFA
80.20640	DN6/8-	G1/2"-	PFA

MADE OF PP

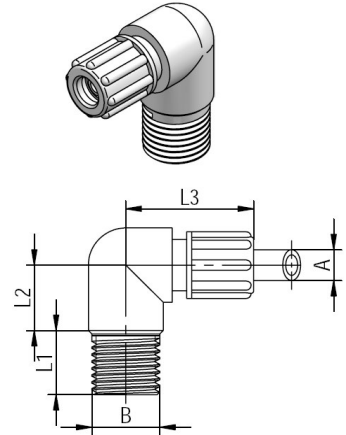
Not available

Male Elbow Connector with G - Thread

SPECIFICATIONS

Part #	A mm	B Thread	Material	L1 mm	L2 mm	L3 mm
80.x1605	DN4/6-	G1/8"-	xx	8	12	25
80.x1610	DN4/6-	G1/4"-	xx	8	15	27
80.x1615	DN4/6-	G3/8"-	xx	12	15	29
80.x1620	DN4/6-	G1/2"-	xx	14	20	32
80.x1625	DN6/8-	G1/8"-	xx	8	12	30
80.x1630	DN6/8-	G1/4"-	xx	12	15	30
80.x1635	DN6/8-	G3/8"-	xx	12	15	32
80.x1640	DN6/8-	G1/2"-	xx	14	20	35

x = Part # depends on material



ORDER INFORMATION - * = available from stock

MADE OF PVDF

Part #	A	Thread	Material
* 80.11605	DN4/6-	G1/8"-	PVDF
* 80.11610	DN4/6-	G1/4"-	PVDF
80.11615	DN4/6-	G3/8"-	PVDF
80.11620	DN4/6-	G1/2"-	PVDF
* 80.11625	DN6/8-	G1/8"-	PVDF
* 80.11630	DN6/8-	G1/4"-	PVDF
80.11635	DN6/8-	G3/8"-	PVDF
80.11640	DN6/8-	G1/2"-	PVDF

MADE OF PFA

Part #	A	Thread	Material
* 80.21605	DN4/6-	G1/8"-	PFA
* 80.21610	DN4/6-	G1/4"-	PFA
80.21615	DN4/6-	G3/8"-	PFA
80.21620	DN4/6-	G1/2"-	PFA
* 80.21625	DN6/8-	G1/8"-	PFA
* 80.21630	DN6/8-	G1/4"-	PFA
80.21635	DN6/8-	G3/8"-	PFA
80.21640	DN6/8-	G1/2"-	PFA

MADE OF PP

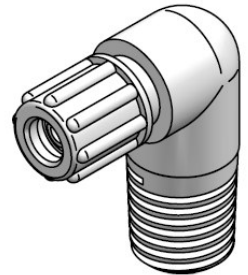
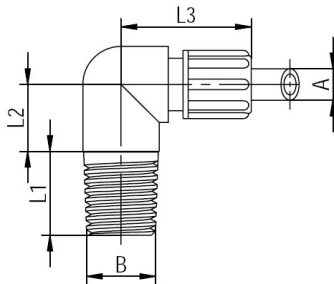
Part #	A	Thread	Material
80.31605	DN4/6-	G1/8"-	PP
80.31610	DN4/6-	G1/4"-	PP
80.31615	DN4/6-	G3/8"-	PP
80.31620	DN4/6-	G1/2"-	PP
80.31625	DN6/8-	G1/8"-	PP
80.31630	DN6/8-	G1/4"-	PP
80.31635	DN6/8-	G3/8"-	PP
80.31640	DN6/8-	G1/2"-	PP

Male Elbow Connector with NPT - Thread

SPECIFICATIONS

Part #	A mm	B Thread	Material	L1 mm	L2 mm	L3 mm
80.x1805	DN4/6-	NPT1/8"-	xx	10	12	25
80.x1810	DN4/6-	NPT1/4"-	xx	15	15	27
80.x1815	DN4/6-	NPT3/8"-	xx	15	15	29
80.x1820	DN4/6-	NPT1/2"-	xx	20	20	32
80.x1825	DN6/8-	NPT1/8"-	xx	10	12	30
80.x1830	DN6/8-	NPT1/4"-	xx	15	15	30
80.x1835	DN6/8-	NPT3/8"-	xx	15	15	32
80.x1840	DN6/8-	NPT1/2"-	xx	20	20	35

x = Part # depends on material



ORDER INFORMATION - * = available from stock

MADE OF PVDF

Part #	A	Thread	Material
* 80.11805	DN4/6-	NPT1/8"-	PVDF
* 80.11810	DN4/6-	NPT1/4"-	PVDF
80.11815	DN4/6-	NPT3/8"-	PVDF
80.11820	DN4/6-	NPT1/2"-	PVDF
80.11825	DN6/8-	NPT1/8"-	PVDF
80.11830	DN6/8-	NPT1/4"-	PVDF
80.11835	DN6/8-	NPT3/8"-	PVDF
80.11840	DN6/8-	NPT1/2"-	PVDF

MADE OF PFA

Part #	A	Thread	Material
* 80.21805	DN4/6-	NPT1/8"-	PFA
* 80.21810	DN4/6-	NPT1/4"-	PFA
80.21815	DN4/6-	NPT3/8"-	PFA
80.21820	DN4/6-	NPT1/2"-	PFA
80.21825	DN6/8-	NPT1/8"-	PFA
80.21830	DN6/8-	NPT1/4"-	PFA
80.21835	DN6/8-	NPT3/8"-	PFA
80.21840	DN6/8-	NPT1/2"-	PFA

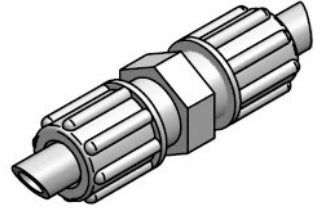
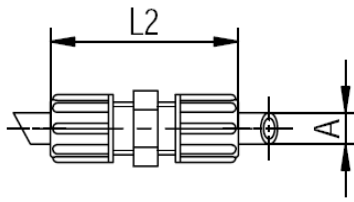
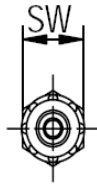
MADE OF PP

Not available

Union (Tube Connection)

SPECIFICATIONS

Part #	A mm	Material	L2 mm	SW mm
80.x1005	DN4/6-	xx	39	14
80.x1010	DN6/8-	xx	47	19
80.x1015	DN8/10-	xx	53	22
80.x1020	DN10/12-	xx	58	24



x = Part # depends on material

ORDER INFORMATION - * = available from stock

MADE OF PVDF

Part #	A	Material
80.11005	DN4/6-	PVDF
80.11010	DN6/8-	PVDF
80.11015	DN8/10-	PVDF
80.11020	DN10/12-	PVDF

MADE OF PFA

Part #	A	Material
80.21005	DN4/6-	PFA
80.21010	DN6/8-	PFA
80.21015	DN8/10-	PFA
80.21020	DN10/12-	PFA

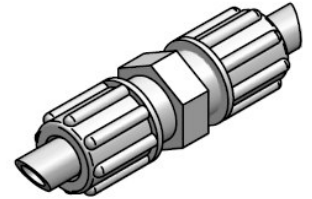
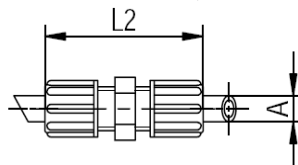
MADE OF PP

Part #	A	Material
80.31005	DN4/6-	PP
80.31010	DN6/8-	PP
80.31015	DN8/10-	PP
80.31020	DN10/12-	PP

Union (Tube/Pipe Connection)

SPECIFICATIONS

Part #	A mm	B mm	Material		
80.x1205	DN4/6-	D6-	xx		
80.x1210	DN6/8-	D8-	xx		
80.x1215	DN8/10-	D10-	xx		
80.x1220	DN10/12-	D12-	xx		



x = Part # depends on material

ORDER INFORMATION - * = available from stock

MADE OF PVDF

Part #	A	B	Material
80.11205	DN4/6-	D6-	PVDF
80.11210	DN6/8-	D8-	PVDF
80.11215	DN8/10-	D10-	PVDF
80.11220	DN10/12-	D12-	PVDF

MADE OF PFA

Not available

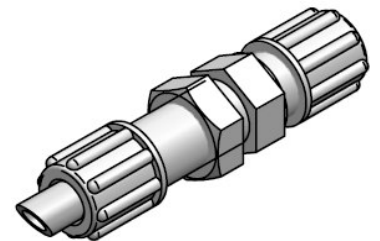
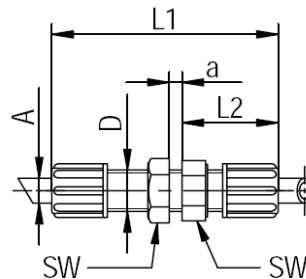
MADE OF PP

Part #	A	B	Material
80.31205	DN4/6-	D6-	PVDF
80.31210	DN6/8-	D8-	PVDF
80.31215	DN8/10-	D10-	PVDF
80.31220	DN10/12-	D12-	PVDF

Bulkhead Union (Tube Connection)

SPECIFICATIONS

Part #	A mm	Material	D mm	L1 mm	L2 mm	SW mm	a
80.x1405	DN4/6-	xx	10.5	53	31	14	9
80.x1410	DN6/8-	xx	14.5	62	35	19	10
80.x1415	DN8/10-	xx	16.5	71	40	22	11
80.x1420	DN10/12-	xx	18.5	78	45	24	11



x = Part # depends on material

ORDER INFORMATION - * = available from stock

MADE OF PVDF

Part #	A	Material
* 80.11405	DN4/6-	PVDF
* 80.11410	DN6/8-	PVDF
80.11415	DN8/10-	PVDF
80.11420	DN10/12-	PVDF

MADE OF PFA

Part #	A	Material
* 80.21405	DN4/6-	PFA
* 80.21410	DN6/8-	PFA
80.21415	DN8/10-	PFA
80.21420	DN10/12-	PFA

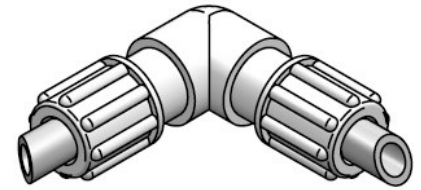
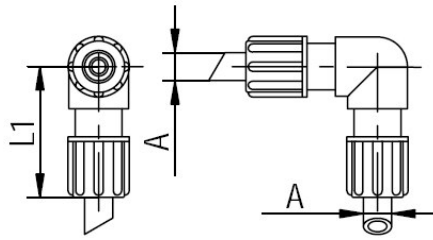
MADE OF PP

Part #	A	Material
80.31405	DN4/6-	PP
80.31410	DN6/8-	PP
80.31415	DN8/10-	PP
80.31420	DN10/12-	PP

Elbow Union (Tube Connection)

SPECIFICATIONS

Part #	A mm	Material	L1 mm
80.x2405	DN4/6-	xx	25
80.x2410	DN6/8-	xx	29
80.x2415	DN8/10-	xx	35
80.x2420	DN10/12-	xx	37



x = Part # depends on material

ORDER INFORMATION - * = available from stock

MADE OF PVDF

Part #	A	Material
* 80.12405	DN4/6-	PVDF
* 80.12410	DN6/8-	PVDF
80.12415	DN8/10-	PVDF
80.12420	DN10/12-	PVDF

MADE OF PFA

Part #	A	Material
* 80.22405	DN4/6-	PFA
* 80.22410	DN6/8-	PFA
80.22415	DN8/10-	PFA
80.22420	DN10/12-	PFA

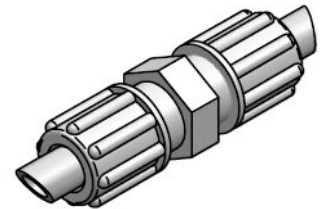
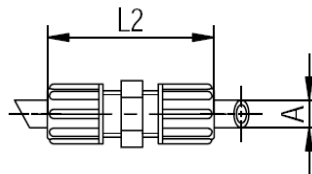
MADE OF PP

Part #	A	Material
80.32405	DN4/6-	PP
80.32410	DN6/8-	PP
80.32415	DN8/10-	PP
80.32420	DN10/12-	PP

Reducer Union (Tube Connection)

SPECIFICATIONS

Part #	A mm	B mm	Material		
80.x2605	DN6/8-	DN4/6-	xx		
80.x2610	DN8/10-	DN4/6-	xx		
80.x2615	DN10/12-	DN4/6-	xx		
80.x2620	DN8/10-	DN6/8-	xx		
80.x2625	DN10/12-	DN6/8-			



x = Part # depends on material

ORDER INFORMATION - * = available from stock

MADE OF PVDF

Part #	A	B	Material
80.12605	DN6/8-	DN4/6-	PVDF
80.12610	DN8/10-	DN4/6-	PVDF
80.12615	DN10/12-	DN4/6-	PVDF
80.12620	DN8/10-	DN6/8-	PVDF
80.12625	DN10/12-	DN6/8-	PVDF

MADE OF PFA

Part #	A	B	Material
80.22605	DN6/8-	DN4/6-	PFA
80.22610	DN8/10-	DN4/6-	PFA
80.22615	DN10/12-	DN4/6-	PFA
80.22620	DN8/10-	DN6/8-	PFA
80.22625	DN10/12-	DN6/8-	PFA

MADE OF PP

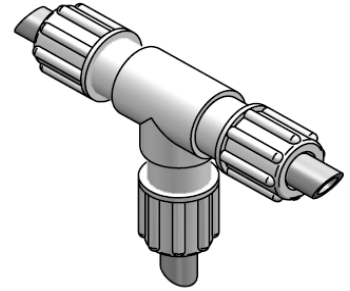
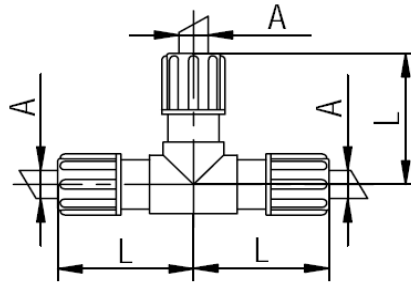
Part #	A	B	Material
80.32605	DN6/8-	DN4/6-	PP
80.32610	DN8/10-	DN4/6-	PP
80.32615	DN10/12-	DN4/6-	PP
80.32620	DN8/10-	DN6/8-	PP
80.32625	DN10/12-	DN6/8-	PP

T - Union (Tube Connection)

SPECIFICATIONS

Part #	A mm	Material	L mm
80.x2005	DN4/6-	xx	25
80.x2010	DN6/8-	xx	29
80.x2015	DN8/10-	xx	35
80.x2020	DN10/12-	xx	37

x = Part # depends on material



ORDER INFORMATION - * = available from stock

MADE OF PVDF

Part #	A	Material
* 80.12005	DN4/6-	PVDF
* 80.12010	DN6/8-	PVDF
80.12015	DN8/10-	PVDF
80.12020	DN10/12-	PVDF

MADE OF PFA

Part #	A	Material
* 80.22005	DN4/6-	PFA
* 80.22010	DN6/8-	PFA
80.22015	DN8/10-	PFA
80.22020	DN10/12-	PFA

MADE OF PP

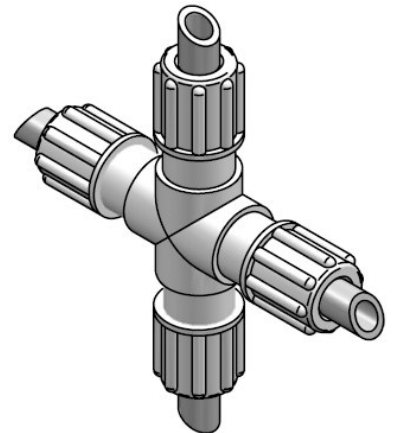
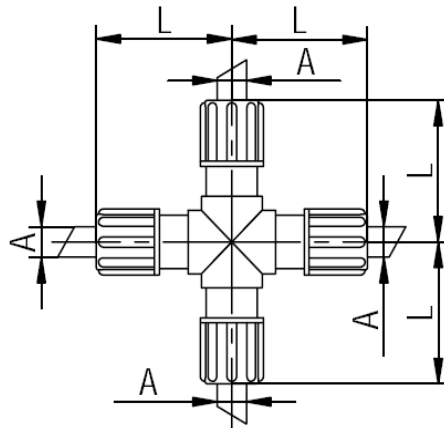
Part #	A	Material
80.32005	DN4/6-	PP
80.32010	DN6/8-	PP
80.32015	DN8/10-	PP
80.32020	DN10/12-	PP

Cross - Union (Tube Connection)

SPECIFICATIONS

Part #	A mm	Material	L mm
80.x2205	DN4/6-	xx	25
80.x2210	DN6/8-	xx	29
80.x2215	DN8/10-	xx	35
80.x2220	DN10/12-	xx	37

x = Part # depends on material



ORDER INFORMATION - * = available from stock

MADE OF PVDF

Part #	A	Material
* 80.12205	DN4/6-	PVDF
* 80.12210	DN4/6-	PVDF
80.12215	DN4/6-	PVDF
80.12220	DN4/6-	PVDF

MADE OF PFA

Not available	
---------------	--

MADE OF PP

Part #	A	Material
80.32205	DN4/6-	PP
80.32210	DN4/6-	PP
80.32215	DN4/6-	PP
80.32220	DN4/6-	PP

Spare Parts - knurled nut

ORDER INFORMATION

MADE OF PVDF

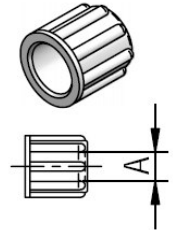
Part #	A	Material
80.19005	D6-	PVDF
80.19010	D8-	PVDF
80.19015	D10-	PVDF
80.19020	D12-	PVDF

MADE OF PFA

Part #	A	Material
80.29005	D6-	PFA
80.29010	D8-	PFA
80.29015	D10-	PFA
80.29020	D12-	PFA

MADE OF PP

Part #	A	Material
80.39005	D6-	PP
80.39010	D8-	PP
80.39015	D10-	PP
80.39020	D12-	PP



Spare Parts - clamping ring

ORDER INFORMATION

MADE OF PVDF

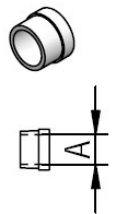
Part #	A	Material
80.19105	D6-	PVDF
80.19110	D8-	PVDF
80.19115	D10-	PVDF
80.19120	D12-	PVDF

MADE OF PFA

Not available

MADE OF PP

Part #	A	Material
80.39105	D6-	PP
80.39110	D8-	PP
80.39115	D10-	PP
80.39120	D12-	PP



Spare Parts - sealing ring

for PFA connector

Spare Parts - cutting ring

ORDER INFORMATION

MADE OF PTFE

Part #	A	Material
80.29205	D6-	PTFE
80.29210	D8-	PTFE
80.29215	D10-	PTFE
80.29220	D12-	PTFE

MADE OF PEEK

Part #	A	Material
80.29305	D6-	PEEK
80.29310	D8-	PEEK
80.29315	D10-	PEEK
80.29320	D12-	PEEK

Specification subject to change without notice.

PDS_E_Fittings & ball valves_04/08_Rev.2

JCT Analysentechnik GmbH

Werner Heisenberg-Straße 4 A-2700 Wiener Neustadt
 Tel. +43 (0) 2622 / 87201 Fax +43 (0) 2622 / 872011
 E-Mail: sales@jct.at Web: www.jct.at

