

Heated Filter JBF 301L



APPLICATION

- For hot filtration of gas samples
- Removes dust and aerosols
- Extractive gas analysis
- Process and emission monitoring

BENEFITS

- Convenient filter replacement
- Quick heat up, max. 30 min
- Easy installation

FEATURES

- No cold spots
- 2nd heated gas outlet
- Filtration from outside to inside
- Operating temperature 180 °C
- Filter replacement without tools
- Filter elements of bonded SiC, SS, PTFE
- Self regulating PTC heater
- No need for temperature controller
- Low temperature status contact
- Power supply 115 to 230 VAC 50/60Hz
- Protection housing



JCT
Analysentechnik
GmbH

Sample Probes

Heated Hoses

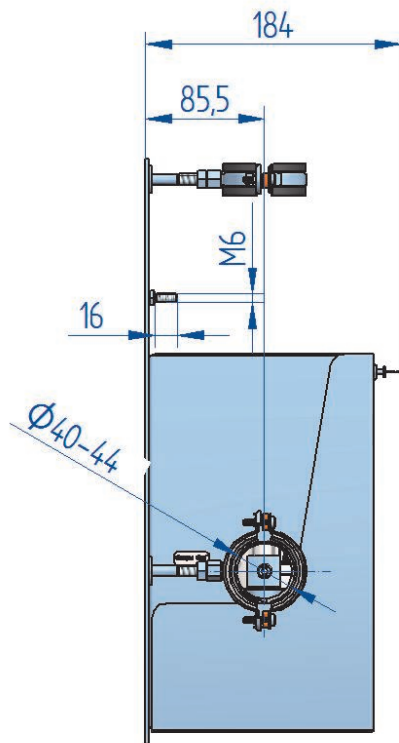
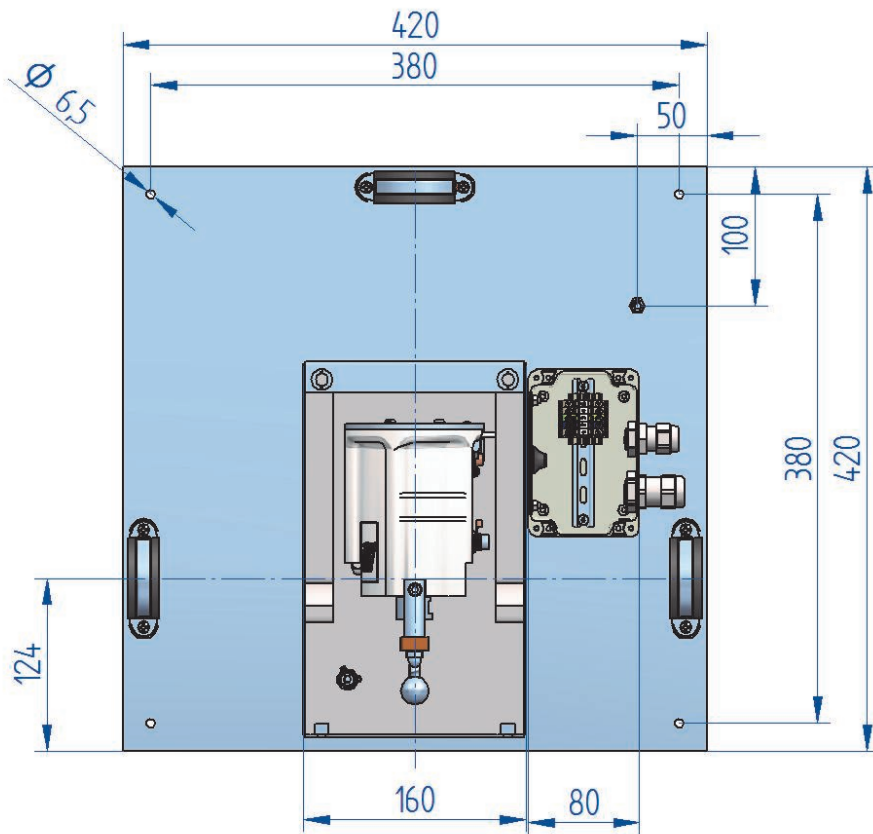
Conditioners

NOx converter

Accessories



TECHNICAL DRAWING



TECHNICAL DATA

SPECIFICATIONS

Filter element	Bonded silicon carbide; pore size 2µm; 40/20x66 mm
Option	Surface coated; pore size 0,2µm; 40/20x66 mm
Operating pressure	max. 200 kPa abs.
Filter surface	82 cm ²
Dead volume	62 cm ³
Heated sample gas ports	1/8" NPT female thread
Gas wetted parts	1.4571, SiC, Viton® (FKM)
Operating temperature	approx. 180 °C
Heater element	PTC self limited
Low temperature threshold	150 °C
Heat up time	approx. 30 min
Dust load	max. 1g/m ³ , flow dependant

SPECIFICATIONS

Ambient temperature	-20 °C ... +60 °C
Power consumption	approx. 300 VA
Power supply	115-230VAC 50/60Hz
Connection terminal	Springtype terminal clamping range 0,08....2,5 mm ²
Cable entry power supply	Conduit M20
Cable entry status contact	Conduit M26
Contact rating status contact (volt free)	min. 24VDAC/50mA max. 230VAC/5A cosP 0,95
Mounting brackets	Ø 40-44 mm
Protection class	IP40 according to EN60529
Protection housing	SS304, thermally isolated
Weight	approx. 12 kg
Approval / Sign	CE

ORDER CODE

Art.No.	Model ^{*2}	Filter ^{*1}		2nd gas outlet	Mounting board	Protection housing	Supply voltage
		2µm bonded silicon carbide	0,2µm surface coated				115VAC to 230VAC 50/60Hz
36.00170	JBF 301L	X			X	X	X
36.00180	JBF 301L		X		X	X	X
36.00190	JBF 301LT	X		X	X	X	X
36.00200	JBF 301LT		X	X	X	X	X

*1 other filter types on request

*2 Scope of delivery: device, operating manual

ACCESSORIES

Part No.	Description
35.90080	Male connector SS316, for 6 mm tube
35.90081	Male connector SS316, for 8 mm tube
35.90083	Male connector, SS316, for 1/4" tube
35.90084	Male connector, SS316, for 3/8" tube
35.90086	Male connector, SS316, for 6 mm tube
35.90087	Adapter for G3/8" connector SS316, for 10 mm tube

SPARE PARTS

Part No.	Description
35.90070	T-handle assembly kit
35.90071	Extractor kit complete

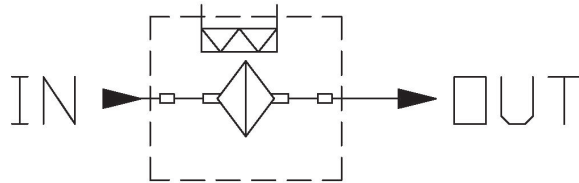
CONSUMABLE PARTS

Part No.	Description
35.93100	Consumables kit, consisting of 1 x O-ring A and B, 1 x filter element bonded SiC 2 µm, 2 x gaskets Viton®
35.93101	Consumables kit, consisting of 1 x O-ring A and B, 1 x filter element surface coated 0,2 µm, 2 x gaskets Viton®
35.93014	Filter element bonded SiC, 2 µm, 40/20 x 66mm
35.93018	Filter element surface coated, 0,2 µm, 40/20 x 66mm
35.90015	Gasket for filter element, 200 °C, Viton® (FKM)
35.90010	O-ring A, 200 °C, Viton® (FKM)
35.90011	O-ring B, 200 °C, Viton® (FKM)

FLOW CHARTS

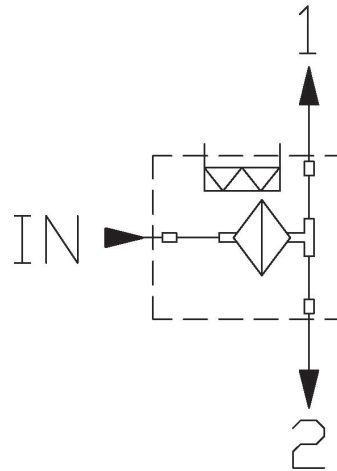
Standard models

(Art.No. 36.00170 and 36.00180)

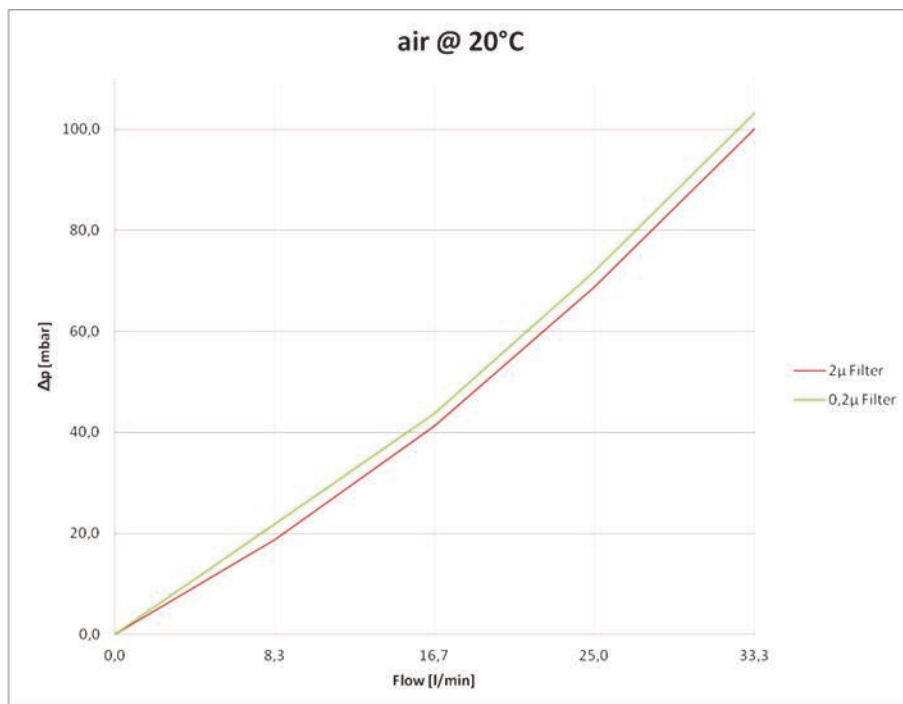


Models with 2nd gas outlet

(Art.No. 36.00190 and 36.00200)



FLOW DIAGRAM



Specification subject to change without notice.

PDS_E_JBF301L_v1.3

JCT Analysetechnik GmbH

Werner Heisenberg-Straße 4 A-2700 Wiener Neustadt
 Tel. +43 (0) 2622 / 87201 Fax +43 (0) 2622 / 872011
 E-Mail: sales@jct.at Web: www.jct.at

