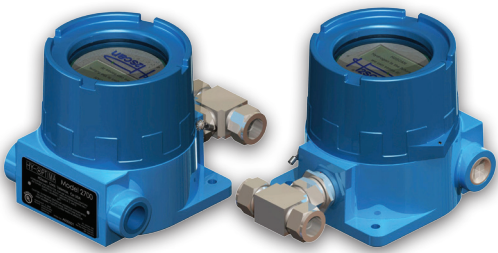


# SERVOTOUGH H2scan

**EXPLOSION-PROOF IN-LINE HYDROGEN PROCESS ANALYZER, USING A SOLID-STATE, NON-CONSUMABLE SENSOR CONFIGURED TO OPERATE IN PROCESS GAS STREAMS**



## H2scan

The H2scan hydrogen process analyzer features thin film technology that provides a direct hydrogen measurement that is not cross-sensitive to other gases. The H2scan is ideal for applications where real-time, hydrogen specific measurements can enhance process efficiencies, diagnostics and maintenance management.

The H2scan does not require significant application development for each mix of hydrocarbon gases, yet it still exceeds industry standards. Used as a compliment to the light hydrocarbon analysis capability of the SERVOTOUGH SpectraScan, the combination of the two new and innovative technologies used challenges traditional GC analysis. By producing an accurate measurement at considerably faster speed, the H2scan/SpectraScan combination is a superior, yet simpler, detection for recycled and waste gas, and heating valve applications, achieved at considerably lower implementation and product lifetime costs.

## FLEXIBLE

- Easily configurable alongside SERVOTOUGH SpectraScan
- Simple system integration
- 'Chip on a flex' technology enables real-time operation

## EASY TO USE

- Does not require significant application development for each mix of hydrocarbon gases
- Includes customer support

## LOW COST OF OWNERSHIP

- Low installation costs
- Low lifetime cost-of-ownership in comparison to GC technologies

## UNRIVALLED PERFORMANCE

- Hydrogen measurement not cross-sensitive to other gases
- Non-depleting sensing technology maintains performance without deterioration

## BENCHMARK COMPLIANCE

- UL Class 1, Division 1, Groups B, C, D
- ATEX & CSA certifications

Learn more about the H2scan  
VISIT [SERVOMEX.COM](http://SERVOMEX.COM)



# PRODUCT DATA: H2scan

## Product Data:

The H2scan Series includes sensor types that are designed for specific hydrogen ranges, corrosive gas tolerances and operation when no hydrogen is present.

Product	Hydrogen Range		H <sub>2</sub> must be present	CO <sub>2</sub> Limit	H <sub>2</sub> S Limit	Max pressure		Response time (T <sub>90</sub> ) (sec)	Accuracy <sup>3</sup> (absolute)		Drift/week <sup>3</sup> (absolute)		Repeatability <sup>3</sup> (absolute)		Linearity <sup>3</sup> (absolute)		Calibration Background Gas
	Low	High				Bar (g)	psig		Low to 10% H <sub>2</sub>	10% to 100% H <sub>2</sub>	Low to 10% H <sub>2</sub>	10% to 100% H <sub>2</sub>	Low to 10% H <sub>2</sub>	10% to 100% H <sub>2</sub>	Low to 10% H <sub>2</sub>	10% to 100% H <sub>2</sub>	
2700	0.5% to 100%		Yes	0	0	2	30	<60	0.3% 1.0%	0.2% 0.4%	0.2% 0.4%	0.2% 0.4%	0.2% 0.4%	0.2% 0.4%	0.2% 0.4%	N <sub>2</sub>	
2710	0.1% to 20%		Yes	<100ppm	<20ppm	1 <sup>1</sup>	15 <sup>1</sup>	<90	0.15% 0.3%	0.15% 0.3%	0.15% 0.3%	0.15% 0.3%	0.15% 0.3%	0.15% 0.3%	0.15% 0.3%	N <sub>2</sub>	
2720	0.4% to 5%		No	0	0	2	30	<60	0.3% NA	0.3% NA	0.3% NA	0.3% NA	0.3% NA	0.3% NA	0.3% NA	O <sub>2</sub> , N <sub>2</sub>	
2730	0.5% to 100%		Yes	<100ppm	<1000ppm	2	30	<60	0.3% 1.0%	0.2% 0.4%	0.2% 0.4%	0.2% 0.4%	0.2% 0.4%	0.2% 0.4%	0.2% 0.4%	N <sub>2</sub>	
2740	0.5% to 100%		Yes	20%	10%	2	30	<90	0.3% 1.0%	0.2% 0.4%	0.2% 0.4%	0.2% 0.4%	0.2% 0.4%	0.2% 0.4%	0.2% 0.4%	N <sub>2</sub>	

- 2710 products operated at 15psig will have a reduced H<sub>2</sub> range of 0.1% - 10% H<sub>2</sub>
- 2720 products may be operated in an Air, O<sub>2</sub> or N<sub>2</sub> backgrounds (see manual)
- Sensor performance specifications assume a dry process stream, and ambient temperature of 25°C, pressure compensation and are in addition to any errors in the calibration gases used. The accuracy is specified for the serial port and digital display output only.

## Product Data:

### SAMPLE FOR MEASUREMENTS

Sample for measurement	H <sub>2</sub>
Sample Flow	0.1 to 10l/min
Dew Point	non condensing
Particulates	<5ppm

## Device Specification:

### Size:


- 190.50mm (L)  
x 137.16mm (W)  
x 144.78 (D)

### Operating Temperature:


- 20°C - 55°C

## Certifications:

### 2700 Series

- UL Class 1, Division 1, Groups B, C, D UL 508,1203
- ATEX  II 2 G ExdIIB+H<sub>2</sub> T4 Gb
- CSA-22.2 No. 30-M1986 R(2012)

### Remote Control

- UL Class 1, Division 1, Groups A, B, C, D, UL913
- ATEX  II 1G Exia IICT4
- CAN/CSA C22.2 No. 157-92 R(2012)

(ATEX versions are limited to 1.1ATM max process gas pressure)

## KEY APPLICATIONS

- Refinery
- Natural Gas
- Industrial Gas Supply
- Petrochemical
- Manufacturing

AMERICAS BUSINESS CENTER  
Tel: +1 281 295 5800  
Email: americas\_sales@servomex.com

ASIA PACIFIC BUSINESS CENTRE  
Tel: +86 (0)21 6489 7570  
Email: asia\_sales@servomex.com

EUROPEAN BUSINESS CENTRE  
Tel: +31 (0) 79 330 1580  
Email: europe\_sales@servomex.com

LATIN AMERICA BUSINESS CENTER  
Tel: +55 11 5188 8166  
Email: brazil\_sales@servomex.com

INDIA BUSINESS CENTRE  
Tel: +91 22 3934 2700  
Email: MEI\_sales@servomex.com

MIDDLE EAST BUSINESS CENTRE  
Tel: +971 6552 8073  
Email: MEI\_sales@servomex.com

SERVOMEX.COM

Servomex has a policy of constant product improvement and reserves the right to change specifications without notice.  
© Servomex Group Limited. 2014. A Spectris company. All rights reserved.

**SERVOMEX** 