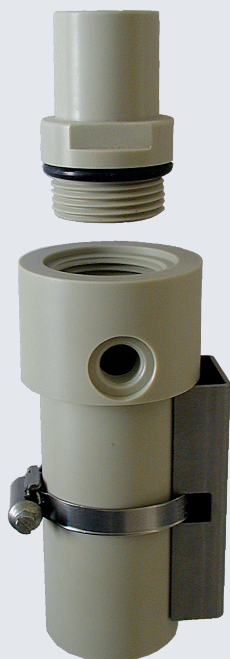


Flow-Through Fittings

Energy

Water



ARF 201 Flow-Through Fitting

Molded plastic flow-through fitting with one sensor location

Compact flow-through fitting for one sensor, measurement preferably in bypass, also for corrosive media. An adapter allows the connection of sensors using different mounting techniques.

Material: polypropylene; process connection: internal G 1/4" thread

Facts

- material: polypropylene
- for sensors with G 1" connection
- with adapter for sensors with Pg 13.5 connection
- direction of flow 90°
- process connection via internal G 1/4" thread

Applications

Moderately polluted corrosive process media

Product Line

ARF 201 Flow-Through Fitting

G 1", PP-H, G 1/4" internal thread

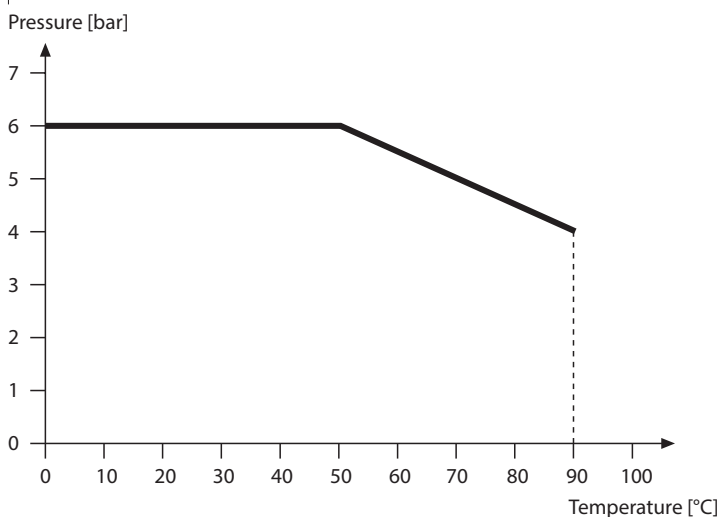
Order No.

ARF 201

Specifications

Material:	PP-H
Process connection:	internal G 1/4" thread
Pressure:	max. 6 bars (50 °C), 4 bars (90 °C)
Temperature:	0 ... 90 °C
Sensor locations:	1 x G 1" incl. gasket 30 x 4 (EPDM) 1 x Pg 13.5 with ZU 0323 adapter
Sensors:	cond: SE 604, SE 630 pH: diameter 12 mm, length 120 mm oxy: SE 703, SE 706/1

Pressure/Temperature Diagram



For up-to-date information, please visit www.knick.de

Isolation Amplifiers
Transmitters

Indicators

Process Analytics

Portable Meters

Laboratory Meters

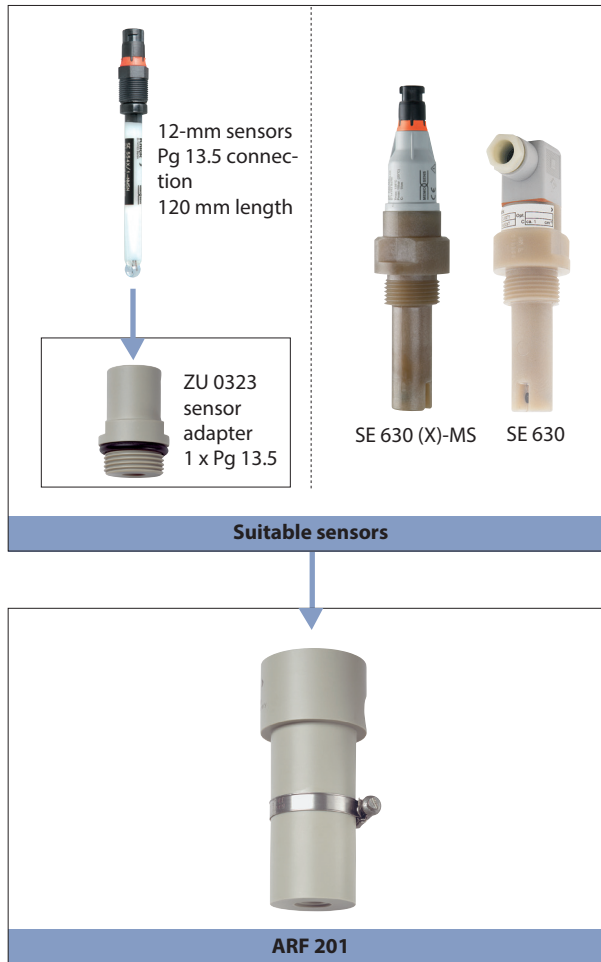
Sensors

Fittings

Knick >

Modular System

A sensor adapter is available for this flow-through fitting if 12-mm sensors are to be used.



Accessories

Adapter

for sensors

with Pg 13.5
material: PP-H
gasket: EPDM 30 x 4

Order No.

ZU 0323

Flow-Through Fittings

Energy

Water

ARF 201 Flow-Through Fitting

Dimension Drawing

